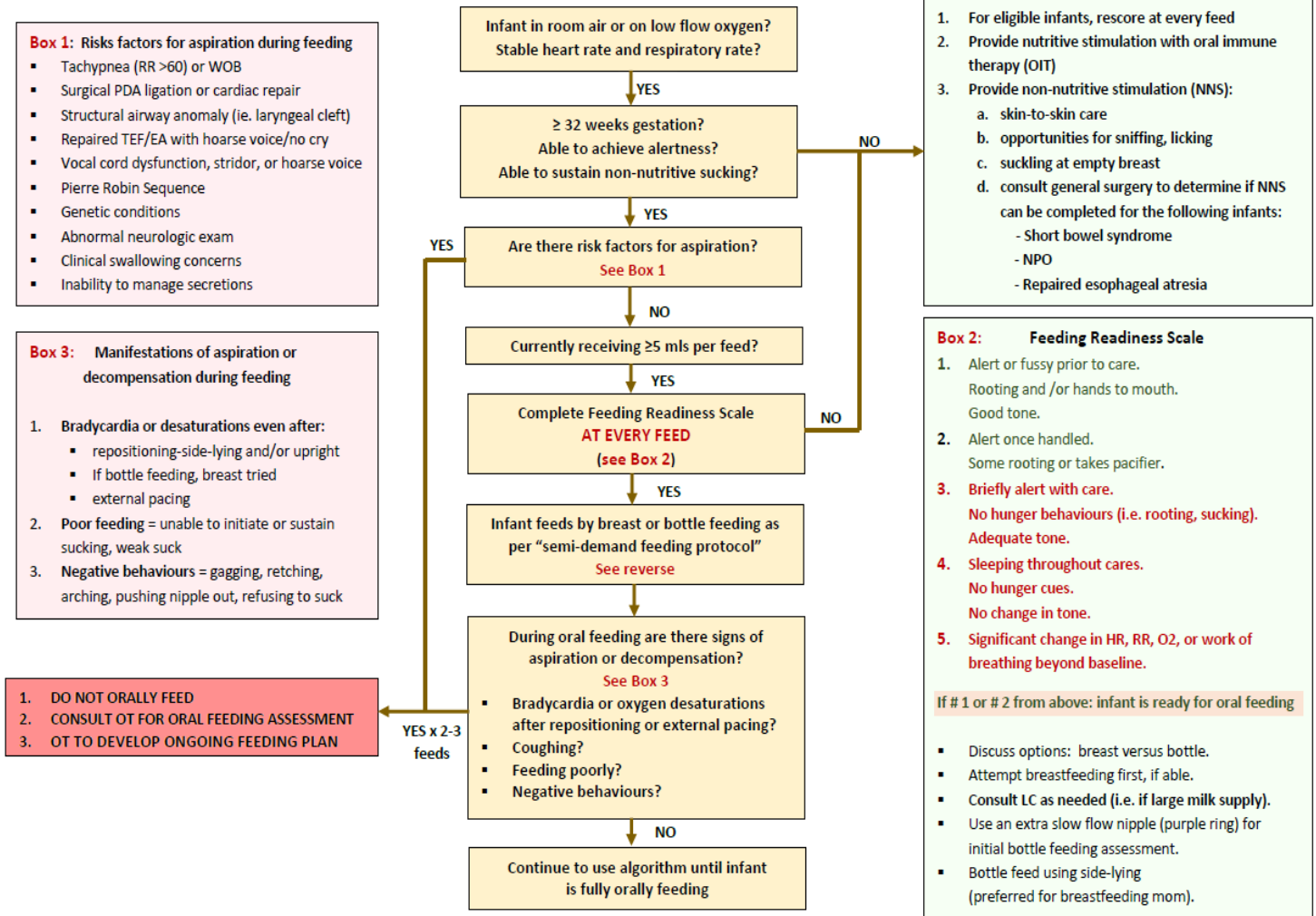


SICKKIDS NICU ORAL FEEDING DECISION TREE

Purpose: To support decision-making for initiating and advancing oral feeding



Semi-Demand Feeding Protocol

- At each feeding:
 - Gently wake infant and offer a soother or finger for non-nutritive sucking.
 - If possible, allow infant to suck for a few minutes prior to assessing for oral feeding.
 - If infant responds by remaining in alert/awake state (even if eyes are closed) and/or presents with non-nutritive sucking, (scores 1 or 2 on feeding readiness scale), offer the breast or bottle.
 - If the infant does not stay awake, (scores 3 or 4 on feeding readiness scale), feed by NG.
 - Feed orally until infant stops sucking/swallowing and does not voluntarily resume sucking/swallowing or up to their TFI or for no longer than 20 minutes.
 - Give remainder of the feed (if any) by NG.
 - Repeat the process at infant's next feed or prior if the infant shows signs of feeding readiness (rooting, sucking).
 - If infant is being breast fed and has a maximum allowed intake, weigh before and after breast feeding.
 - If taking near full TFI by mouth, discuss demand feeding with medical team.