

# ALGORITHM FOR THE SCREENING AND IMMEDIATE MANAGEMENT OF BABIES AT RISK FOR NEONATAL HYPOGLYCEMIA

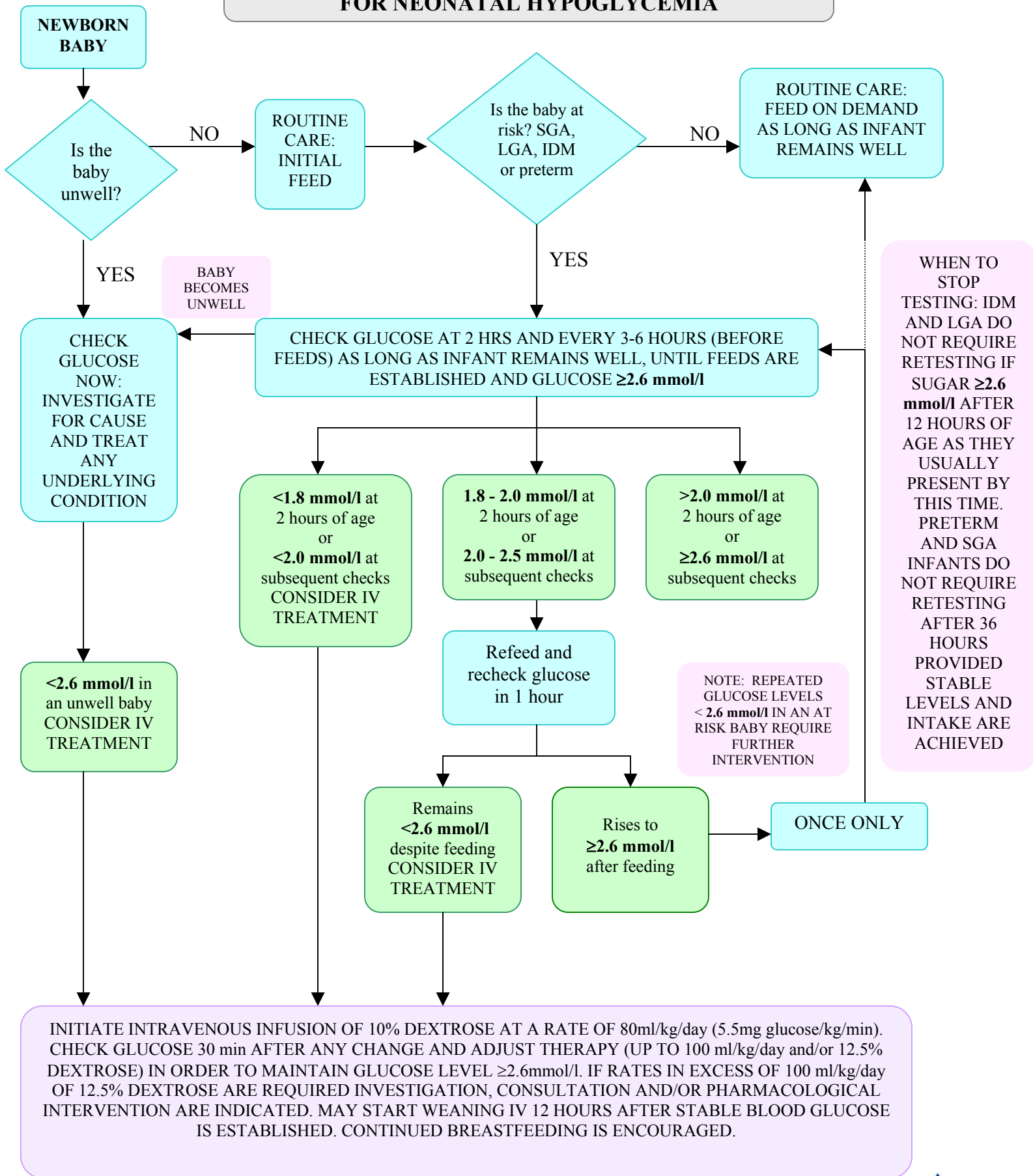


Figure 1) Screening for neonatal hypoglycemia. IDM Infant of diabetic mother; IV Intravenous; LGA Large-for-gestational-age; SGA Small-for-gestational-age. CPS Statement: [www.cps.ca/english/statements/FN/fn04-01.htm](http://www.cps.ca/english/statements/FN/fn04-01.htm)